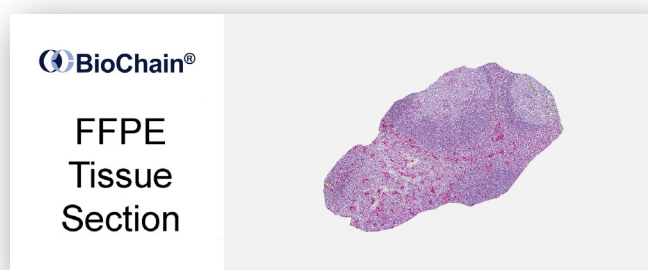
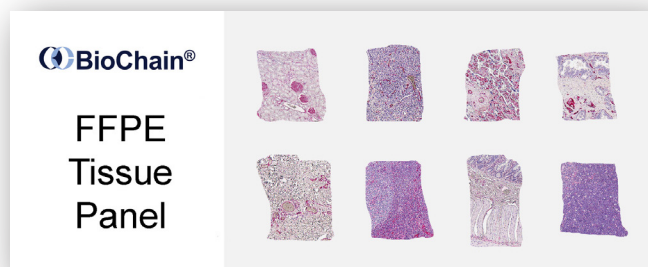
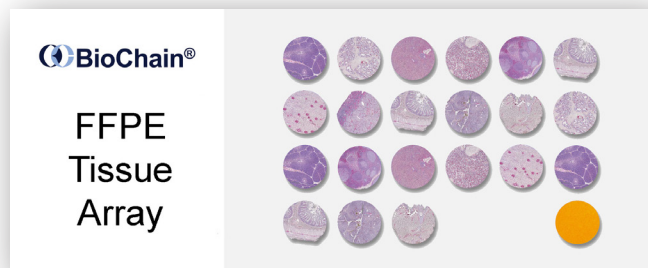


Tissue Sections and Arrays

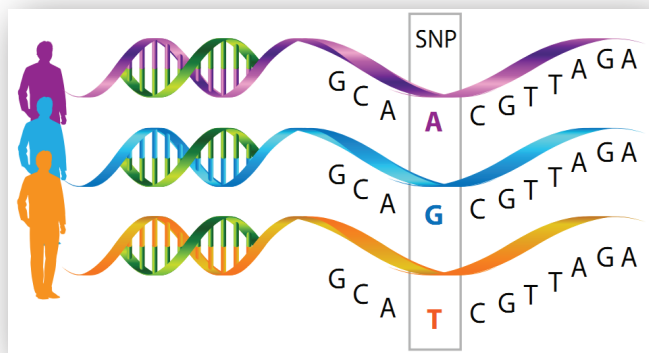
LSBio, in partnership with BioChain, offers numerous cell and tissue products. LSBio's catalog includes a wide range of formalin-fixed, paraffin-embedded (FFPE) tissue sections and arrays from human and mammalian sources representing various benign, neoplastic, and disease states. LSBio's FFPE tissues are perfect for localizing genes and proteins within the cell and are appropriate for use in both immunohistochemistry and *in situ* hybridization studies. Further suitable applications include *in situ* PCR, DNA and RNA isolation, and antibody validation. Each tissue is backed by the LSBio guarantee.

- **Formalin-fixed, paraffin-embedded (FFPE)**
- **Human, Mouse, Rat, Monkey**
- **IHC, ISH, *in situ* PCR**
- **Normal, Disease, Tumor**
- **Matched Pairs: Primary Tumor/Adjacent Normal, Primary Tumor/Corresponding Metastasis**
- **Mouse Whole Brain Segmentation Panels**



NGS Characterized Tissue Sections

LSBio offers FFPE tumor tissues that have been prescreened for single nucleotide polymorphisms (SNPs), insertions and deletions (indels), and copy number variations (CNVs) by targeted Next Generation Sequencing (NGS) to identify gene mutations and mutational hotspots. Each tissue comes with detailed information regarding the donor, cancer type, as well as NGS information such as chromosomal position, variant type (SNP or indel), alternate allele variations, quality score, depth of coverage, allele type, transcript ID, and more. These products are ideal for verification, genotyping, or identification of new mutational hotspots.

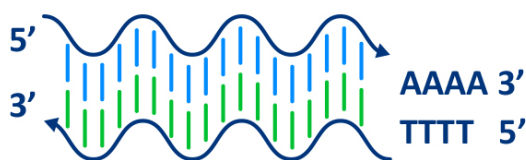


RNA and DNA Extracts

In partnership with BioChain, LSBio offers first-strand cDNA, genomic DNA, and total RNA from various tissues and organs at different developmental and pathogenic stages. These products can be used for various genomic, proteomic, and transcriptomic analysis tasks such as mutation discovery and verification, gene expression analysis, gene cloning, novel target discovery and sequencing, next generation sequencing, and PCR amplification. Each product line includes tumor/normal and tumor/metastatic matched pairs that are ideal for identifying tumor-specific and tumor metastatic genes.



DNA



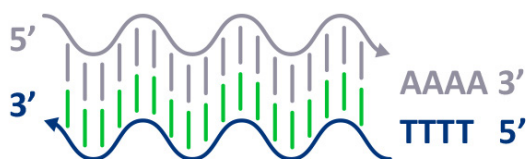
Genomic DNA isolated from frozen and FFPE tissues. A variety of normal, disease, and tumor tissues are available from human, mammalian, and plant sources. Genomic DNA has undergone extensive quality procedures to guarantee its high purity and is suitable for PCR, SNP analysis, Southern Blotting, methylation studies, CNV analysis, comparative genomic hybridization studies, gene expression studies, and Genomic DNA library construction.

RNA



Total RNA free of contamination isolated from normal, disease, and tumor tissues and cell lines from a variety of human, mammalian, and plant sources. LSBio's Total RNA includes a wide spectrum of RNA sizes that range from messenger RNA to micro RNA, siRNA, snRNA, and piRNA. Total RNA is ideal for cDNA library construction, cDNA synthesis, mRNA purification, microRNA study, RT-PCR, RACE, and Northern Blotting.

cDNA



LSBio offers Oligo dT and Random Hexamer primed first-strand cDNA synthesized from Total RNA that has been isolated from a wide range of normal, disease, and tumor tissues from human, mammalian, and plant sources. First-strand cDNA is suitable for PCR amplification, mutation verification, gene comparison, mRNA alternative splicing, gene cloning and sequencing, gene discovery, and gene expression analysis.